

# Introduction

## Site

Oldbury Power Station is located approximately 15 miles north east of Bristol on the banks of the River Severn near to the village of Oldbury-on-Severn. It is situated within the northern part of the South Gloucestershire unitary authority area, adjacent to the boundary with Stroud local authority district.

The station was commissioned in 1967 and has celebrated its 40<sup>th</sup> year of safe and successful operational performance in 2007. Under current plans the site will cease generating electricity at the end of 2008 and move into the defuelling and decommissioning phases.

The site currently employs around 480 permanent staff with almost 100 long-term contractors providing additional services. 77% of the current workforce is resident within the South Gloucestershire (44%) and Stroud (33%) local authority districts, with almost half of all staff living within seven miles of site.

On a very local scale therefore, the site is a significant employer.

## Life in the locality

The overall picture of life in the area around the power station is one of a prosperous and fast-growing local economy.

The Index of Multiple Deprivation 2007 (IMD 2007) is a measure of deprivation which is broken down to Lower Layer Super Output Area (LSOA) level – areas of around 1500 people. There are seven Domains of deprivation and these are used and aggregated to measure deprivation. The Domains are:

- Income
- Employment
- Health deprivation and disability
- Education, skills and training
- Barriers to housing and services
- Crime
- Living environment

South Gloucestershire is an area of relative prosperity and this is indicated by above average rates of population and employment growth, high economic activity and employment rates, relatively low levels of unemployment, and above-average income and earnings levels.

There are 162 LSOAs in South Gloucestershire and, according to the IMD just one of these is among the most deprived 20% in England. The area, in Staple Hill ward, is home to about 1,100 people.

There are other areas within South Gloucestershire which do show higher levels of deprivation. As a largely rural area this is especially true in terms of barriers to housing and services, where access to GPs and other amenities can be difficult.

In addition there are several wards within South Gloucestershire that sit on the northern edge of Bristol and these show higher than average levels of deprivation across the Index. More information from the IMD 2007 can be found in Appendix A.

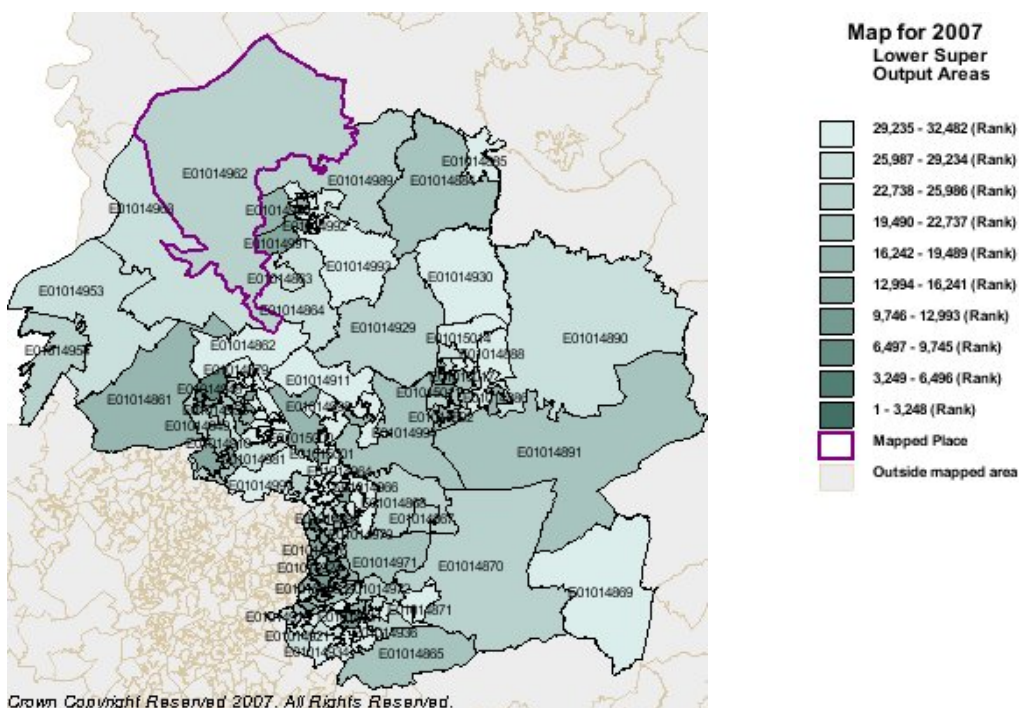
There are diverse employment opportunities within South Gloucestershire with a higher than average proportion of manufacturing, including a range of high-tech, high value added activity such as aerospace. Despite the presence of Oldbury power station, the electricity, gas and water supply sector accounts for only 0.7% of employment in the local area, although this is above the national average of 0.4%.

The site of Oldbury Power Station is a valuable asset which could be the location for alternative employment in the future, once decommissioning of the site has begun. Not least of these is the future use of the buildings ‘outside the fence’ – including the Information Centre and Training Centre. These are both topics for discussion on site this year to enable future plans to be made. If no future use is identified for the buildings there may be an opportunity for them to be used for the benefit of the wider community.

## Oldbury’s Economic Footprint

The site, as a generating station employing almost 500 permanent staff, has a significant impact on the local economy through the salaries paid to staff – a sum of £20 million each year – and much of this is spent locally.

However, as the site ceases generating and moves through its defuelling and decommissioning phases, the number of staff employed by the site will reduce. This will inevitably have an impact on the local economy and it is appropriate for the site to acknowledge this and investigate opportunities to offset it.



**Figure1:** a map of South Gloucestershire which shows the areas of deprivation through colour coding.

The clearest detrimental effect of the site's decommissioning will be the loss of full-time, male employment in the local area. In the Environmental Impact Assessment for Decommissioning (EIAD) document, approved by the Health and Safety Executive in 2008, the loss of jobs in the immediate cluster of wards around the site is identified as adverse and significant.

However, there are a number of ongoing developments across South Gloucestershire that could potentially offset this effect. This includes the development of Bristol Science Park at Emersons Green, which has been backed by the Regional Development Agency, as well as the proposed expansion of Bristol International Airport.

## Vision

***To build and maintain close working relationships with relevant local and regional agencies to support the social and economic life of nearby communities.***

## Aims

- To minimise the impact of the reduction of employment at Oldbury Power Station on the local economy
- To leave viable and sustainable opportunities for future generations

## Methodology

All agreed socio-economic support for local communities will follow the criteria set out in the Nuclear Decommissioning Agency (NDA) draft socio-economic policy as well as following the general principles of working in partnership with local agencies and pursuing match-funding wherever possible.

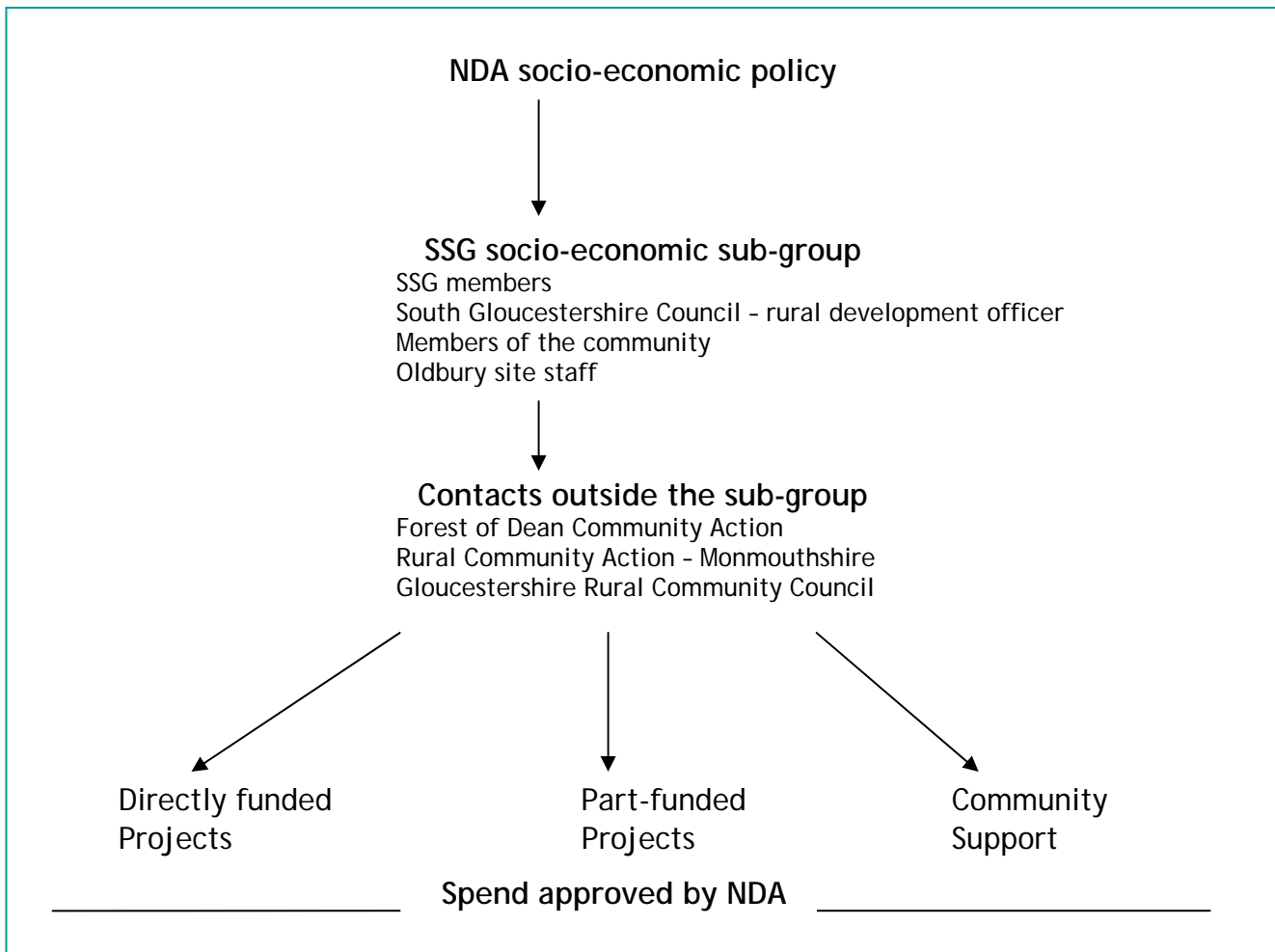
The NDA thematic priorities are:

- Employment – with a preference for higher value job creation
- Education and skills – both to support decommissioning and clean up, and diversification into other sectors
- Economic and social infrastructure – including environmental remediation and improvement, and natural and cultural heritage
- Economic diversification – diversification into other industries and sectors, including support for the local supply chain

The socio-economic funding is delivered through a Site Stakeholder Group (SSG) sub-group, established to advise the site on potential funding for projects. The membership of this group has been expanded during the year, and a drive for increased representation from the community will continue.

In addition, the network of contacts outside the official sphere of the sub-group has grown rapidly during the 2007-8 year and this has improved the range and variety of applications for funding received. Full details of applications received is included in Appendix B.

**Figure 2:** demonstrates the flow of socio-economic decision making at Oldbury Power Station.



## Funding

In this financial year a sum of £30,000 has been allocated for socio-economic development. In addition a sum of £10,000 has been allocated for community support – to make small financial contributions to local community organisations. While this figure has reduced in comparison to the 2007-8 year, it is consistent with the other sites owned by Magnox North and is still significant.

The sub-group will have the authority to invest up to £5,000 in a single project, with any proposal for more than this sum referred to the NDA’s socio-economic panel.

This process, which has been established during the year, enables sites, together with the relevant organisation, to apply for a larger sum of money directly from the NDA. The site has identified several such projects and is working with the NDA to determine their suitability for support.

Outside the NDA funding, the site will also have access to funds from the Parent Body Organisation – EnergySolutions. At the time of writing a sum of £5,000 had been allocated to sites with an additional £75,000 available across the Magnox North fleet for larger project proposals.

To make the best use of the funding available, the sub-group has identified an allocation of spend. While used as guidance, it is felt that this is an appropriate tool to ensure that the NDA receive the greatest benefit for its investment.

- 2 projects, each of £5,000 = £10,000
- 4 projects, each of £3,000 = £12,000
- 4 projects, each of £2,000 = £8,000

**TOTAL = £30,000**

In addition the £10,000 allocated for community support will be allocated in sums up to £500. The sub-group has agreed to delegate responsibility to site staff for these proposals, with a regular report provided to each meeting.

Vikki Tatnell, the site's Change Lead making a certificate presentation to members of the Forest Voluntary Action Forum

## Community Involvement

The site has a busy programme of community involvement in place through the work of its communication team. This involves the team going out to deliver workshops and presentations to schools and community groups across the local area.

In the last year the site undertook a total of 31 activities with schools across the area. As well as workshops on how electricity is generated we also provided mock interview and work experience opportunities.

Communication Assistants undertaking the Primary Power Pack workshop

The site has also completed seven presentations to community groups including Womens' Institutes, Rotary and Probus Clubs.

In addition Oldbury Power Station has hosted 13 visits to site for stakeholder groups including members of the Site Stakeholder Group (SSG), local councillors and a team from a hydro-electric plant in Norway.

The site also has a well used nature trail which is used by a large number of local residents and organisations including the University of the West of England's Department of the Built Environment and numerous birdwatching and naturalist groups. This is another opportunity for the site to engage with people living in the vicinity of Oldbury Power Station.

Visitors from Norwegian hydro-electric plant come to site

During the year Oldbury Power Station also undertook significant public engagement activity to support the Health and Safety's public consultation around the Environmental Impact Assessment for Decommissioning. This involved the site in attendance at a number of events, including the Coleford Music Festival and Oldbury Fun Run, as well as library exhibitions, distribution of leaflets and other literature and presentations to the local town and parish councils.

Members of the community at the evening event held at the Marriott St Pierre in Chepstow

The site has also undertaken a number of stakeholder engagement activities during the year with three successful business events held, one at the Marriott St Pierre in Chepstow, the second at Oldbury Information Centre entitled 'Nature at Oldbury', with a focus on the birds and other wildlife thriving on and around the site, and an event at Thornbury Castle. Each event was very well attended, with more than 50 people in attendance. The feedback from the events is always very positive and the site will continue to build on this in the coming year.

As a result of the 'Nature at Oldbury' event a significant piece of work was undertaken with the orchard that is part of the land around the site. Planted in the 1980s the orchard had become overgrown and the apples that were yielded were poor in quality. Stakeholders provided feedback to suggest that the site should invest time and effort to re-establish the orchard as there are very few remaining sites across South Gloucestershire and the site responded. Contact was made with the management at Leyhill Open Prison, who have an environmental team – a group of supervised inmates – and they attended site to carry out work to bring the orchard back to a healthy state. This is now complete and work has been planned with Oldbury Primary School during the Spring of 2008 to install bat and bug boxes.

A supervised worker from Leyhill Open Prison carries out work in Oldbury's orchard

While these activities are outside of the financial investments that form the basis of this socio-economic plan, it is important to work on wider Corporate Social Responsibility initiatives as outlined above to continue to build not only contacts but also goodwill.

## Potential projects for 2008-9

The projects detailed in this section are those that are 'work in progress' as the socio-economic plan for 2008-9 is written.

- Cyclepath from Oldbury to Thornbury – this project has been proposed and supported in principle by South Gloucestershire Council. The funding requested in total is £200,000 and a proposal has been submitted to the NDA socio-economic panel.
- Sustainability project at Castle School – this project, which requires funding up to £250,000 has been submitted to the NDA socio-economic panel.
- Severn Area Rescue Association (SARA) – as well as SARA being chosen as the site's Charity of the Year, with activities planned to raise funds throughout 2008, a proposal has been submitted to the NDA socio-economic panel for £40,000. The funds, if approved, would be used as part of a larger project to construct a building to act as secure storage and Headquarters for the Association.

## Conclusion

The communities around Oldbury benefited from £60,000 of socio-economic investment in the 2007-8 year. This is not only a significant increase in financial investment but has also provided the site with the opportunity to grow its contacts and attract applications from a far wider range of groups and organisations.

Having been established at the beginning of the 2006-7 financial year the socio-economic sub-group has ensured that requests received at site are dealt with in line with the NDA's criteria for socio-economic funding. In 2007-8 the sub-group dealt with 60 requests for funding. xx (xx%) of these were approved.

While a significant number of these requests continue to fall into the 'corporate good citizen' category, the site has taken the opportunity to build the range and number of contacts and this has helped to improve the quality and number of applications received. Of course, it is important that this work continues during the year.

With a significant amount of socio-economic funding available at site level, together with potential for further funding from the NDA and Energy *Solutions* for specific projects, it is clear that there is an opportunity for Oldbury Power Station to continue to make a difference to the communities of South Gloucestershire.

# Appendix A

## Summary of IMD 2007 – South Gloucestershire

### Indices of Deprivation 2007 – South Gloucestershire Summary

#### Introduction

The Indices of Deprivation 2007 (ID 2007) use a group of statistical indicators to rank the 32,482 Lower Layer Super Output Areas (LSOAs)<sup>i</sup> in England in terms of aspects of their deprivation.

Over 30 such indicators are combined to produce an overall **Index of Multiple Deprivation (IMD)**. Subsets of these indicators are also used to rank areas within seven different “**domains**” of deprivation: Income; Employment; Health Deprivation and Disability; Education, Skills and Training; Barriers to Housing and Services; Crime; and Living Environment. In addition, there are “**sub domains**” within some of these domains.

Annex A is a table of the components of the Index of Multiple Deprivation 2007 summarising the domains, sub-domains and indicators. Most of the indicators feeding into the domains use data from 2005 and population data for the same year is used to calculate rates.

Apart from some minor changes due to updating of obsolete indicators, the methodology of the calculation of ID 2007 is the same as those released in 2004 (ID 2004). Hence, the ID 2007 are directly comparable with the ID 2004.

Most changes in rankings between 2004 and 2007 are therefore likely to reflect real relative change between the two time periods although some differences will be caused by the substitution of new indicators, particularly in the Income Deprivation domain.

Note that changes in rankings reflect relative rather than absolute change so that, for example, deprivation may have lessened in an area where a ranking is worse than in 2004 because other areas have improved at a faster rate.

#### Multiple Deprivation in South Gloucestershire

There are 162 LSOAs in the South Gloucestershire Unitary Authority area. According to the IMD, just 1 of these 162 areas is among the most deprived 20% nationally. However, this is one more than in 2004. The area, in Staple Hill ward, is home to about 1,100 people.

There are no areas within the most deprived 10% nationally. This was also the case in 2004. The most deprived LSOA in South Gloucestershire is ranked 5492, which is outside the most deprived 16% in England

The overall pattern of multiple deprivation in South Gloucestershire for ID 2007 is shown in the first map in Annex B. The second map in this Annex shows the pattern for the earlier ID 2004.

#### Local Authority Summaries

In addition to the Indices, Communities and Local Government have produced six local authority summaries<sup>ii</sup> of the data which give rankings of deprivation for all 354 English district and unitary authorities. South Gloucestershire is among the least deprived 70 for all but two of these rankings, the exceptions being scale of income deprivation (ranked 111<sup>th</sup>) and scale of employment deprivation (112<sup>th</sup>).

#### South Gloucestershire’s Deprivation by Domain

---

<sup>i</sup> Super Output Areas (SOAs) were developed to provide geographies that are of approximately consistent size across the country, and whose boundaries would not change over time. Each Lower Layer SOA has a minimum population of 1,000 and a mean population of 1,500, and they are constrained by the boundaries of the wards used for 2001 Census outputs.

<sup>ii</sup> The six local authority summaries are: Average IMD score; Average IMD rank; Extent of deprivation; Local concentration of deprivation; Scale of income deprivation; and Scale of employment deprivation.

The domains within which deprivation is most prevalent in South Gloucestershire can be highlighted by which have the highest number of LSOAs within the most deprived 10% or 20% nationally. The table below gives details:

No. of S Glos LSOAs (out of 162) in:	IMD	DOMAINS						
		Income	Employment	Health & Disability	Education, Skills & Training	Barriers to Housing & Services	Crime	Living Environment
Most deprived 10% (England)	0	0	0	0	0	2	2	0
Change 04-07	+0	+0	+0	+0	+0	-2	+0	+0
Most deprived 20% (England)	1	2	1	1	10	9	10	1
Change 04-07	+1	+0	+0	+1	+4	+0	+3	+1

Only two of the seven domains include any South Gloucestershire LSOAs among the most deprived 10% in England. These relate to barriers to housing and services and crime but, in both cases, the deprivation affects a very small proportion of the authority's LSOAs (1.2%).

The sub domains of income, education, barriers and the living environment give further indications of the type of deprivation most affecting South Gloucestershire:

No. of S Glos LSOAs (out of 162) in:	SUB DOMAINS							
	Income Affecting Children	Income Affecting Older People	Education: Children & Young People	Education: Skills	Geographic Barriers to Housing & Services	Wider Barriers to Housing & Services	Indoors Living Environment	Outdoors Living Environment
Most deprived 10% (England)	0	0	0	1	17	0	0	0
Change 04-07	+0	+0	+0	+0	+4	+0	+0	-2
Most deprived 20% (England)	3	2	7	9	34	0	3	1
Change 04-07	-2	-2	+6	+0	+4	+0	+3	-10

The barriers sub-domains suggest that geographical barriers are the only type that affects South Gloucestershire LSOAs to any great extent. The education sub-domains indicate that lack of qualifications among adults has a slightly greater impact than lack of achievement among children.

The other sub-domains suggest that the limited deprivation relating to the living environment is more due to the poor condition of housing than to air quality and road traffic accidents and that any income deprivation in South Gloucestershire has a similar impact on older people as it has on children and young people.

Annex C includes maps of South Gloucestershire showing the location of deprivation in each domain and sub domain.

## Annex A – Indices of Deprivation: Domains, Sub-Domains and Indicators

Index of Multiple Deprivation (IMD) 2007		
Domains	Sub-Domains	Indicators
<b>Income Deprivation (22.5% of IMD)</b>	<b>Income Deprivation Affecting Children Index</b>  <b>Income Deprivation Affecting Older People Index</b>  (Two age based summaries of all six indicators)	Adults and children in <ul style="list-style-type: none"> <li>• Income Support Households<sup>1</sup></li> <li>• Income-Based JSA Households<sup>1</sup></li> <li>• Pension Credit (Guarantee) Households<sup>1</sup></li> <li>• Low income Working Tax Credit households<sup>2</sup></li> <li>• Low income Child Tax Credit Households<sup>2</sup></li> </ul> and <ul style="list-style-type: none"> <li>• National Asylum Support Service (NASS) supported asylum seekers<sup>3</sup></li> </ul>
<b>Employment Deprivation (22.5% of IMD)</b>		<ul style="list-style-type: none"> <li>• Working age recipients of Jobseekers Allowance<sup>1</sup></li> <li>• Working age recipients of Incapacity Benefit<sup>1</sup></li> <li>• Working age recipients of Severe Disablement Allowance<sup>1</sup></li> <li>• Participants in the New Deal for the 18-24s not in receipt of JSA<sup>1</sup></li> <li>• Participants in the New Deal for 25+ not in receipt of JSA<sup>1</sup></li> <li>• Participants in the New Deal for Lone Parents<sup>1</sup></li> </ul>
<b>Health Deprivation and Disability (13.5% of IMD)</b>		<ul style="list-style-type: none"> <li>• Years of Potential Life Lost (YPLL)<sup>4</sup></li> <li>• Comparative Illness and Disability Ratio (CIDR)<sup>1</sup></li> <li>• Measures of acute morbidity, derived from Hospital Episode Statistics<sup>5</sup></li> <li>• Proportion of adults under 60 suffering from mood or anxiety disorders<sup>1,5,6</sup></li> </ul>
<b>Education, Skills and Training Deprivation (13.5% of IMD)</b>	<b>Children/young people</b>	<ul style="list-style-type: none"> <li>• Average test score of pupils at Key Stage 2<sup>7</sup></li> <li>• Average test score of pupils at Key Stage 3<sup>7</sup></li> <li>• Best of 8 average capped points score at Key Stage 4<sup>7</sup></li> <li>• Proportion of 16 plus not staying on in school or non-advanced education<sup>1</sup></li> <li>• Secondary school absence rate<sup>7</sup></li> <li>• Proportion of those aged under 21 not entering higher education<sup>8,9</sup></li> </ul>
	<b>Skills</b>	<ul style="list-style-type: none"> <li>• Proportions of adults aged 25-54 with no or low qualifications<sup>10</sup></li> </ul>
<b>Barriers to Housing and Services (9.33% of IMD)</b>	<b>Wider Barriers</b>	<ul style="list-style-type: none"> <li>• Household overcrowding<sup>10</sup></li> <li>• Percentage of homeless households<sup>11</sup></li> <li>• Difficulty of Access to owner-occupation<sup>12</sup></li> </ul>
	<b>Sub Domain: Geographical Barriers</b>	<ul style="list-style-type: none"> <li>• Road distance to a GP surgery<sup>13</sup></li> <li>• Road distance to a general store or supermarket<sup>14</sup></li> <li>• Road distance to a primary school<sup>7</sup></li> <li>• Road distance to a Post Office or sub post office<sup>15</sup></li> </ul>
<b>Crime (9.33% of IMD)</b>		<ul style="list-style-type: none"> <li>• Burglary (4 recorded crime offence types)<sup>16</sup></li> <li>• Theft (5 recorded crime offence types)<sup>16</sup></li> <li>• Criminal damage (10 recorded crime offence types)<sup>16</sup></li> <li>• Violence (14 recorded crime offence types inc. robbery)<sup>16</sup></li> </ul>
<b>Living Environment Deprivation (9.33% of IMD)</b>	<b>The 'indoors' living environment</b>	<ul style="list-style-type: none"> <li>• Social and private housing in poor condition<sup>11,17</sup></li> <li>• Houses without central heating<sup>10</sup></li> </ul>
	<b>The 'outdoors' living environment</b>	<ul style="list-style-type: none"> <li>• Air quality<sup>18,19</sup></li> <li>• Road traffic accidents involving injury to pedestrians and cyclists<sup>20</sup></li> </ul>

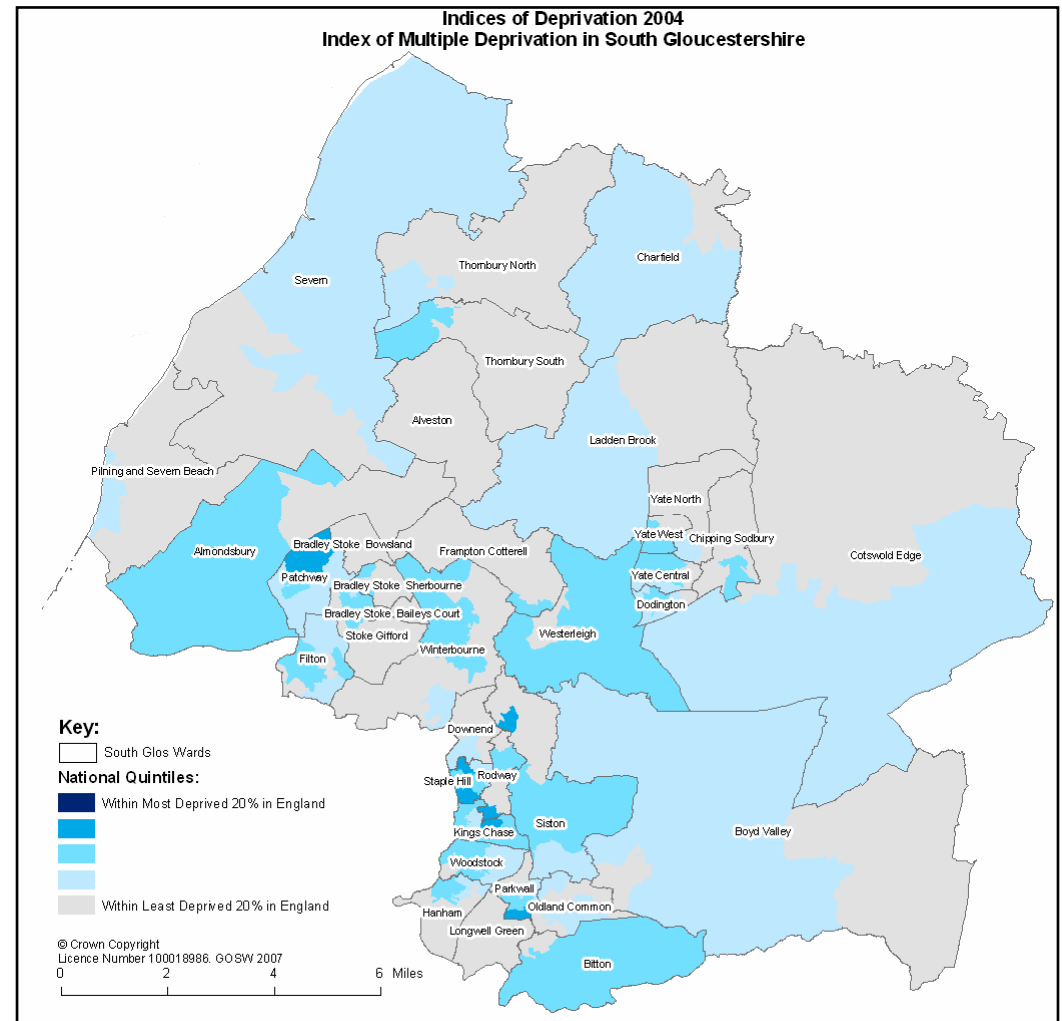
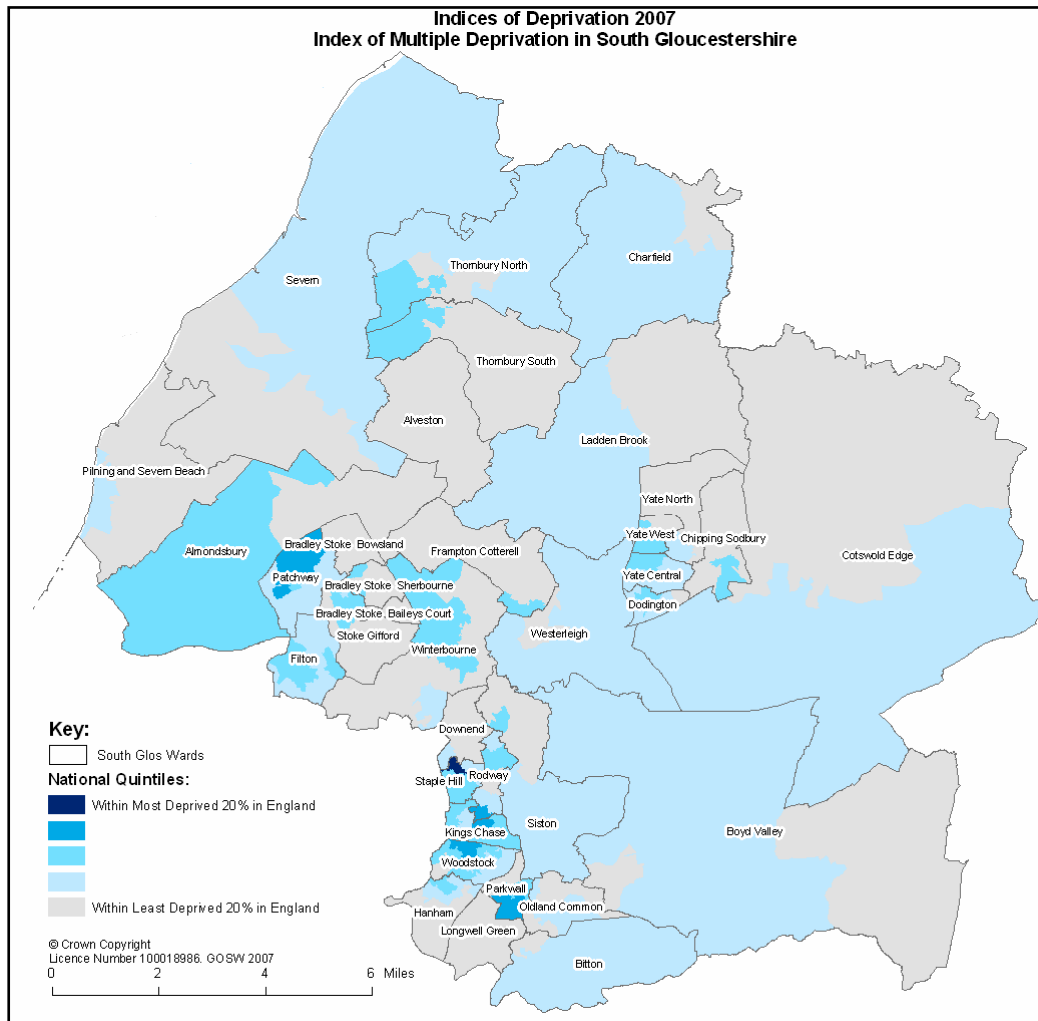
### Sources:

- |   |  |  |
|---|--|--|
| 1. DWP (Department for Work & Pensions).        | 2. HMRC (HM Revenue & Customs).                      | 3. NASS (National Asylum Support Service)  |
| 4. ONS (Office of National Statistics).         | 5. Department of Health.                             | 6. Prescribing Pricing Authority           |
| 7. DCSF (Dept for Children Schools & Families). | 8. UCAS (Universities & Colleges Admission Service). |  |
| 9. HESA (Higher Education Statistics Agency).   | 10. 2001 Census (ONS)                                | 11. CLG (Communities & Local Government).  |
| 12. Heriot-Watt University.                     | 13. National Admin. Codes Service                    | 14. MapInfo Ltd                            |
| 15. Post Office Ltd.                            | 16. Police Force Data.                               | 17. BRE (Building Research Establishment). |
| 18. Staffordshire University.                   | 19. NAEI (National Atmospheric Emissions Inventory). |  |
| 20. DfT (Department for Transport)              |  |  |

### Further Information about Indicators:

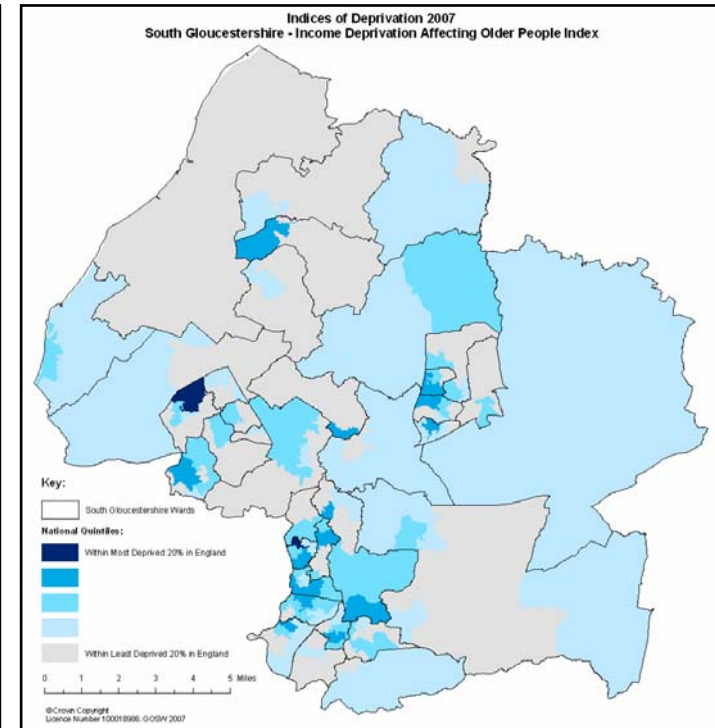
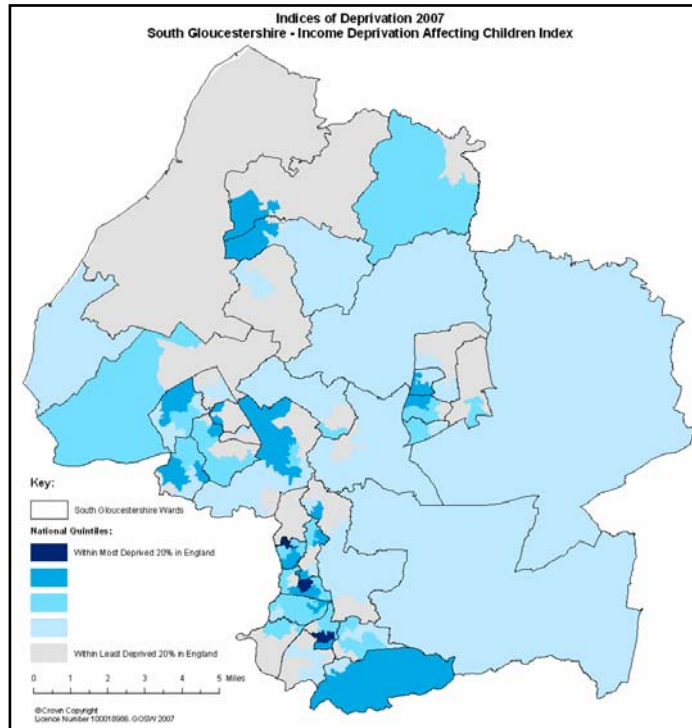
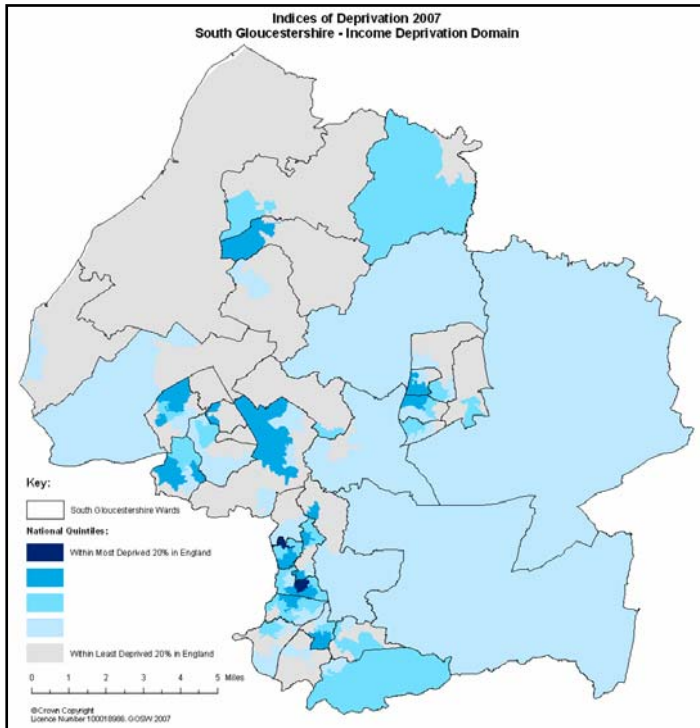
<http://www.communities.gov.uk/documents/communities/pdf/576659>

## Annex B: Maps of Index of Multiple Deprivation (IMD) in South Gloucestershire LSOAs for ID 2007 and ID 2004



## Annex C: Deprivation by Domain and Sub Domain

### Income Domains and Sub Domains



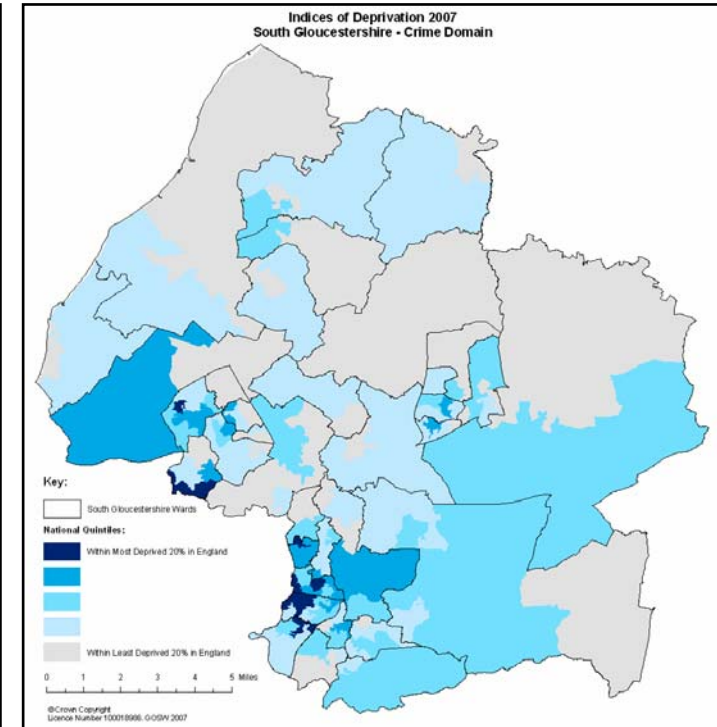
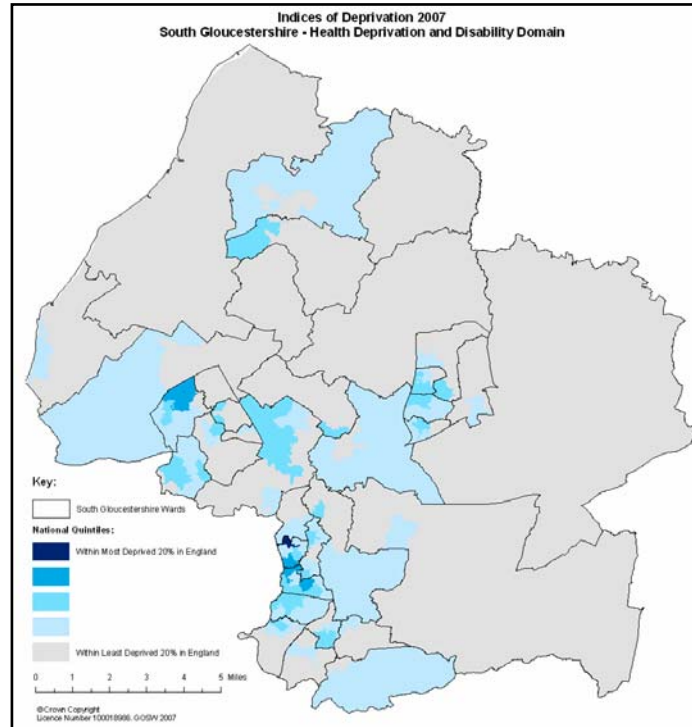
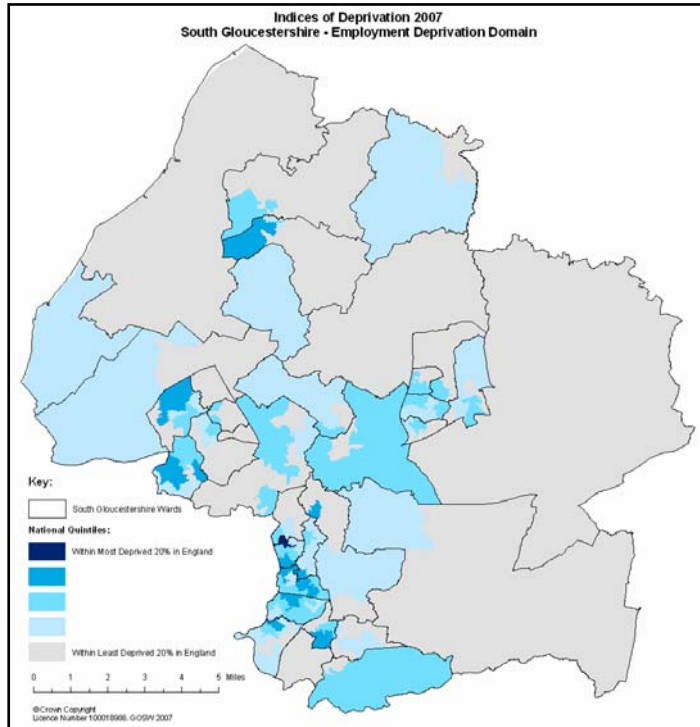
#### **Income Domain Indicators:**

Adults and children in households receiving income-based benefits.

#### **Sub domains Indicators:**

Children and older people receiving income-based benefits.

## Employment, Health and Crime Domains



### Employment Domain Indicators:

Unemployment & Incapacity benefit recipients & participants in "New Deals".

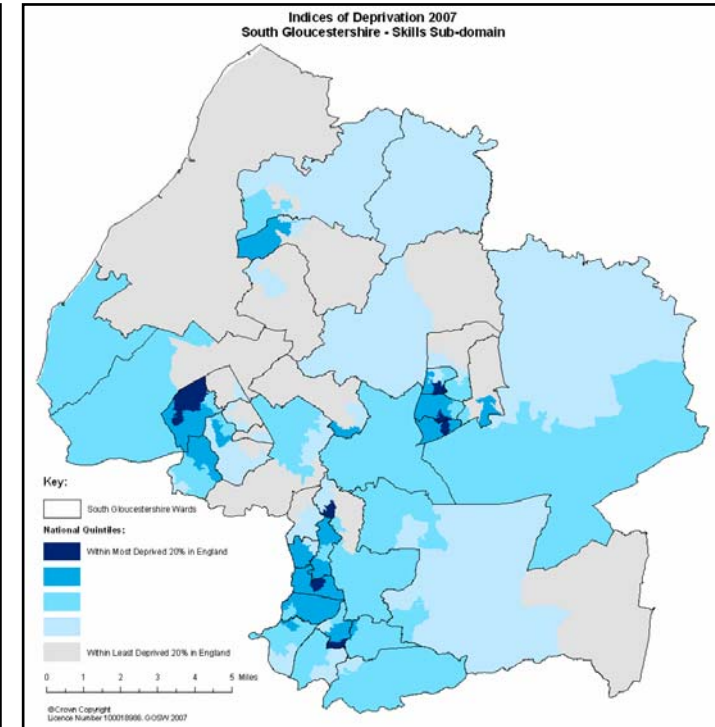
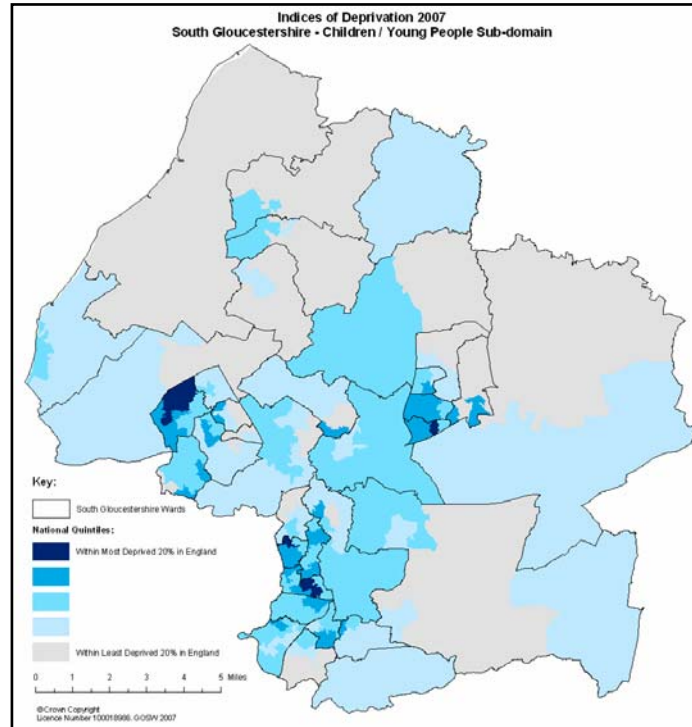
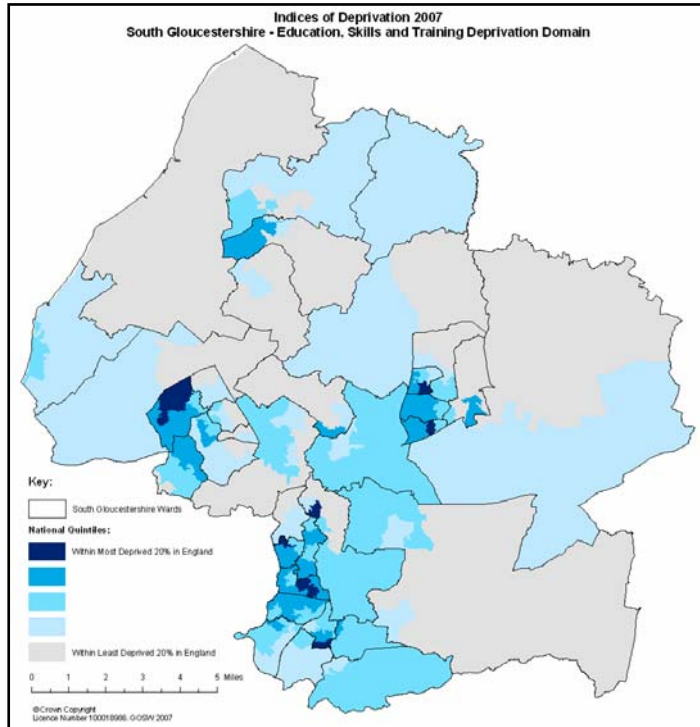
### Health Domain Indicators:

Measures of illness & disability, mental health problems and hospital admissions.

### Crime Domain Indicators:

Crime rates for burglary, violence, theft and criminal damage.

## Education, Skills & Training Domain & Sub Domains



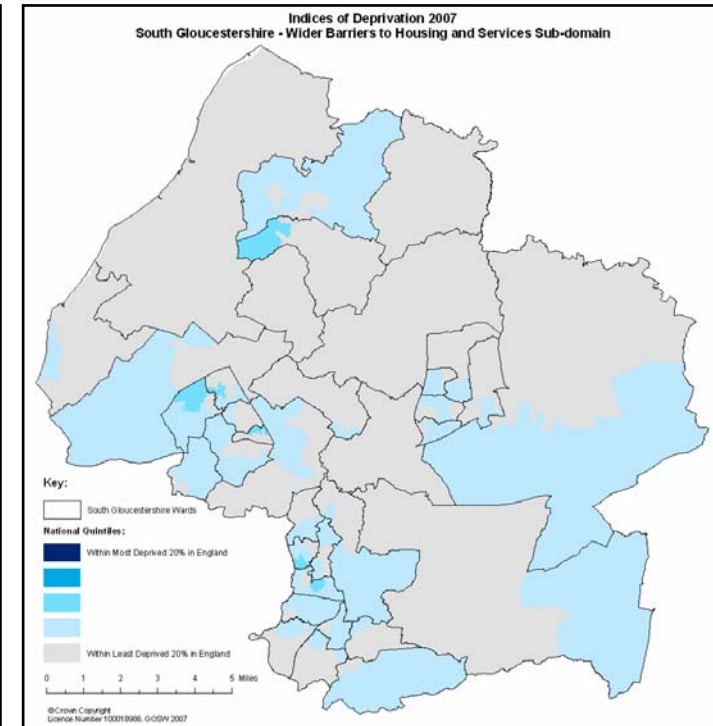
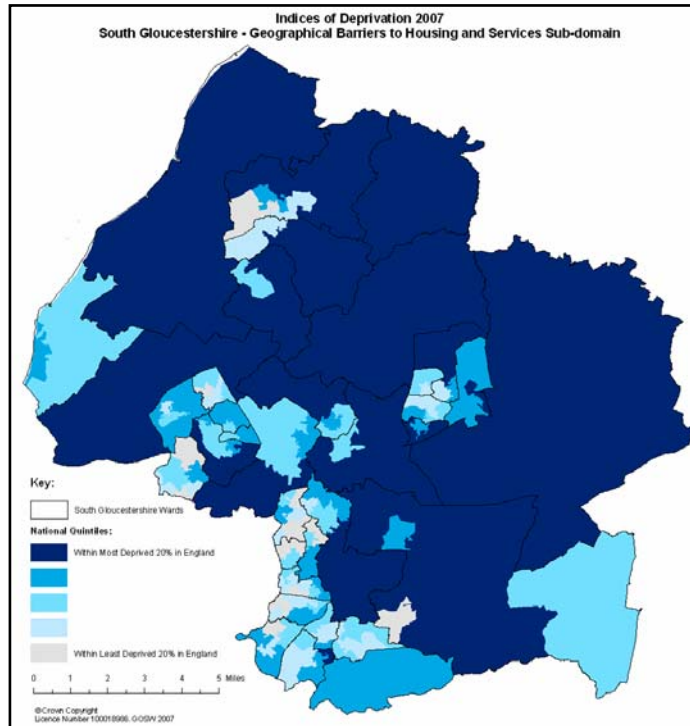
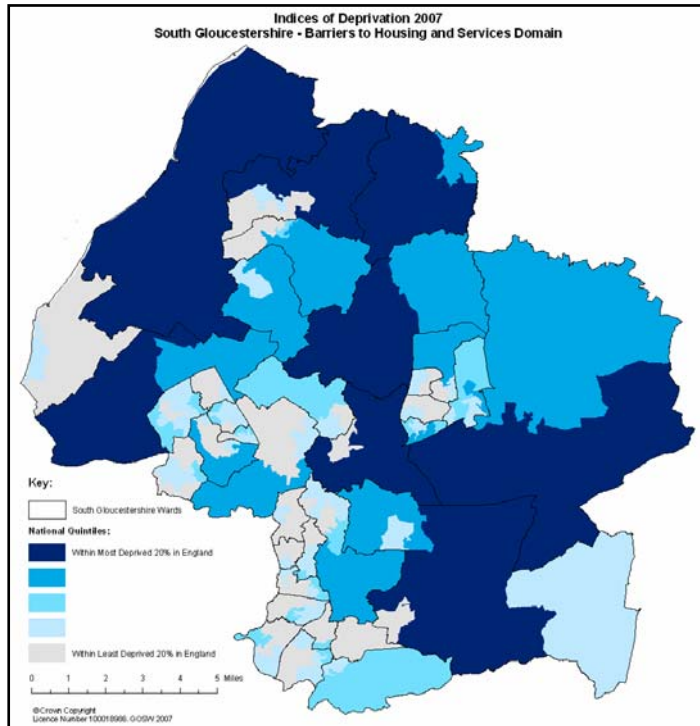
### Education Domain Indicators:

Performance at Key Stages 2,3 & 4, number staying on at school and numbers entering higher education, school absenteeism and proportion of people with no or low qualifications.

### Sub domain Indicators:

The Children & Young People sub domain is made up of all indicators except the one relating to qualifications, which is the single indicator in the Skills sub domain.

## Barriers to Housing & Services Domain & Sub Domains



### Barriers Domain Indicators:

Road distance to a GP, supermarket or convenience store, primary school and post office, overcrowding, difficulty of access to owner-occupation and homelessness.

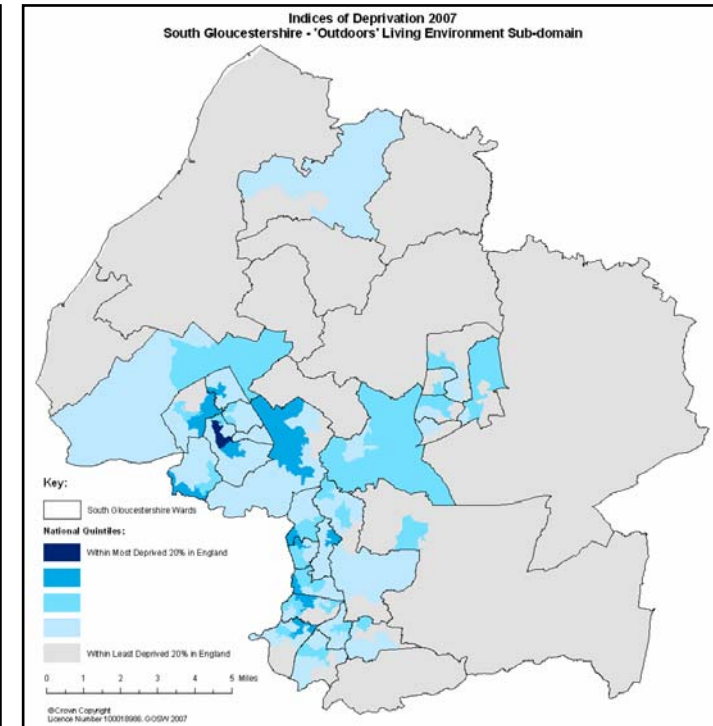
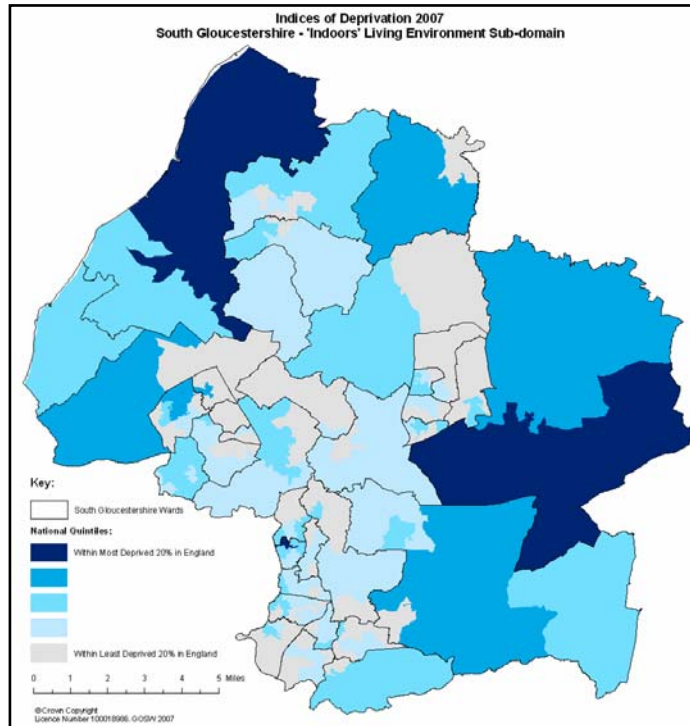
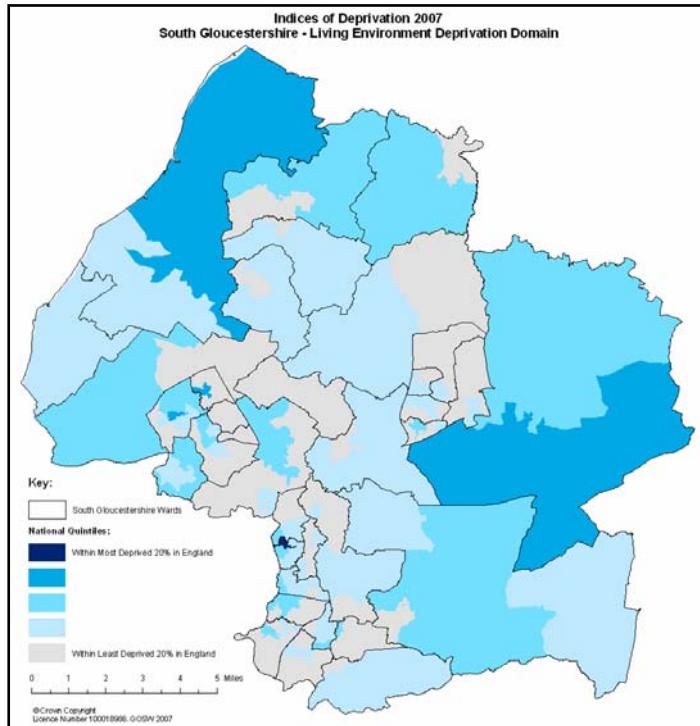
### Geographical barriers sub domain indicators:

Only the road distance indicators.

### Wider barriers sub domain indicators:

Overcrowding, access to owner-occupation and homelessness.

## Living Environment Domain & Sub Domains



### Living Environment Domain Indicators:

Social and private housing in poor condition, houses without central heating, air quality and road accidents to pedestrians and cyclists.

### Indoors Living Environment sub domain indicators:

Those relating to housing in poor condition and without central heating.

### Outdoors Living Environment sub domain indicators:

Air quality and road accidents.

**Appendix B**  
**Socio-economic funding requests approved**  
**2007-8**



Site Stakeholder Group

**OLDBURY POWER STATION**

**A report on the activity of the SSG socio-economic sub-group**  
**2007-2008**

## **1<sup>st</sup> Olveston Scout Group**

**Amount donated £1000**

### **Who is the beneficiary?**

Local group running the full range of scouting activities from beavers, cubs, scouts up to explorers. Brownies and Guides will also use the building.

The Scouts groups are all well subscribed and the new HQ is larger and better equipped than the former one which was over 30 years old and Oldbury's contribution will help to complete the necessary renovations. The area has been recognised both by the government and by South Gloucestershire Council as one of the most deprived areas in terms of access to services and if the scout group did not exist children would have to travel into Thornbury for these activities. Having a range of scouting activities greatly adds to village life.

### **Link to NDA criteria**

Locality, investment in young people

## **Charfield Memorial Hall**

**Amount donated £500**

### **Who is the beneficiary?**

Local hall with no disabled facilities, and the condition of the existing facilities means that it is difficult to attract new or returning users and organisations such as Blood Donors. Oldbury contribution will help them to achieve their overall aims to make the hall and playing fields more accessible and appealing to the residents of Charfield and the wider community.

### **Link to NDA criteria**

Support for local infrastructure and locality

## **Aust Village Hall**

**Amount donated £500**

### **Who is the beneficiary?**

Aust is a small community with a small village hall which provides a setting and focus for local events such as coffee mornings, aerobics and village meetings. Maintenance of the hall has been neglected over the years and the hall is now in need of significant spend on roof repairs as well as general redecoration. A new team has been elected by the villagers to take on the Village Hall management, and are focused on this Community Regeneration project, to which Oldbury has made a contribution.

### **Link to NDA criteria**

Support for local infrastructure and locality

## **Forest Voluntary Action Forum**

**Amount donated £2160**

### **Who is the beneficiary?**

Forest Voluntary Action Forum (FVAF) is the recognised volunteering and voluntary sector support agency for the Forest of Dean District. The Group works with over 500 groups across the district providing training, advice, support, direct services and representation.

Oldbury provided the funding to enable FVAF, in partnership with Hartpury College, to facilitate the training and certification of over 300 members of these groups. They have gained a qualification from the Chartered Institute of Environmental Health Foundation Food Hygiene, enabling them to provide refreshments to their groups or customers.

Vikki Tatnell, HR Change Lead at Oldbury presented certificates to the successful students at St Stephen's Church, Belle Vue, Cinderford on Saturday 16 June 2007.

### **Link to NDA criteria**

Support for identified area of deprivation, education and skills, local infrastructure

## **The Salvation Army**

**Amount donated £1000**

### **Who is the beneficiary?**

The Salvation Army community hall based in Staple Hill, an area recognised as 'deprived' on the National Indices of Social Deprivation. The funding provided will purchase audio-visual equipment for use by a wide range of groups who use the hall.

The Hall is situated in the heart of Staple Hill where there are high levels of unemployment, single homeless and a growing immigrant population all of which put a great strain on limited resources for the locality.

### **Link to NDA criteria**

Investment in deprived area of South Gloucestershire, local infrastructure

## **Oldbury Fun Run**

**Amount donated £1000**

### **Who is the beneficiary?**

Oldbury Fun Run did not take place last year due to a lack of committee members. A new committee was democratically elected at a public meeting, and the funding was provided to re-invigorate the event and introduce several new features, designed to create a complete day out for families and individuals. The aim was to encourage competitors and supporters of the Fun Run to stay in the village for the remainder of the day.

### **Link to NDA criteria**

Locality, local infrastructure

## **Thornbury Orchestra**

**Amount donated £500**

### **Who is the beneficiary?**

A young orchestra, formed in the last three years, which supports local concerts in the Thornbury area. The funding provided will support the orchestra to hire extra music for the group and help the committee to raise the profile of the Orchestra, establish a website to promote their work in the community and encourage youngsters to join the group.

**Link to NDA criteria**

Locality

**Thornbury in Bloom**

**Amount donated £500**

**Who is the beneficiary?**

Thornbury in Bloom is run by a small band of volunteer members who spend time fund raising and organising displays to sustain the level of excellence that has been achieved in past years. In 2006 the group were awarded a Gold Award in the National Competition and the London & Manchester Trophy for outstanding contribution to the environment initiative for their Wildflower and Wildlife Meadow. Funding helped the group to maximise their displays in the town.

**Link to NDA criteria**

Locality

**Forest of Dean Contact a Family** Amount donated £500

**Who is the beneficiary?**

Local, independent charity supporting families living in the Forest of Dean who care for a child, or children, with disabilities. Their activities are primarily aimed at children and young people who for whatever reason, because of their disability, find it difficult to access mainstream out-of-school activities. Whenever possible they support them in accessing mainstream facilities, on occasions providing volunteer support.

The specialist provision they offer helps individuals develop the social skills required to successfully access mainstream provision. The funding provided will enable the group to provide a series of activities and events for the young people who need it.

**Link to NDA criteria**

Support for identified area of deprivation, education and skills

**Arts and Community in Thornbury**

**Amount donated £4000**

Presenting a cheque for £4000 to the Chair of Arts and Community in Thornbury, Philip Darley and members of the committee on Monday 23 July 2007.

Included in the picture are: Mike Heaton, Head of Environment, Health, Safety and Quality at Oldbury, Cllr Malcolm Lynden and Cllr Matthew Riddle, members of the SSG Socio-Economic sub group.

**Who is the beneficiary?** Arts and Community in Thornbury (ACT) has been set up as an independent (not for profit) organisation solely with the purpose of developing and building a new state of the art performance venue in Thornbury.

It will serve the local town and nearby villages which look to Thornbury as a centre. It will become a useful facility throughout South Gloucestershire, bridging the arts facilities vacuum between Bristol and Cheltenham.

**Link to NDA criteria**

Local infrastructure, locality

**Thornbury Swimming Club**

**Amount donated £500**

**Who is the beneficiary?**

The Club provides the very best coaching and training facilities for all club members and help each of their swimmers reach their potential.

One swimmer is currently British age group breaststroke champion at 100m and 200m and is earmarked to make the final in the London Olympics, whilst one disabled swimmer is still a member of the world class potential squad earmarked to swim in the next Paralympics in Beijing.

The club requested funding for support of covering coaching fees, pool costs and support toward the warm weather training camp in Cyprus in October.

**Link to NDA criteria**

Locality, investment in young people

**The Meadows Breakfast Club**

**Amount donated £500**

**Who is the beneficiary?**

The Meadows Primary School is set in the rural community of Bitton, but serve a population that extends as far as Bath, Keynsham, Kingswood and Bridgegate.

The children attending the school come from families who on average have a higher social need than most families in South Gloucestershire. The school requested funding to start the club in September this year with the aim of providing affordable childcare with high quality play and healthy eating opportunities.

**Link to NDA criteria**

Locality, investment in young people

**Twinford Neighbourhood Watch**

**Printing of newsletter**

**Who is the beneficiary?**

Local neighbourhood watch group who have a catchment area of 160 houses. They issue an annual newsletter which this year included a letter requesting people to be more active and volunteer as a street contact, becoming more neighbourly without being intrusive, together with imparting advice from the police. The funding request was for financial support, but instead the site printed 160 copies of the newsletter for the group to distribute.

**Link to NDA criteria**

Locality

**The Breakthrough Project**

**Amount donated £1,500**

**Who is the beneficiary?**

The Breakthrough Project is aimed at supporting pupils with behaviour and attention difficulties as it uses sport-related activities to address the pupil's problems and difficulties and gives sporting rewards for desired behaviour.

The picture shows Steve Spiers, senior Sports Development Officer at South Gloucestershire Council and Eirian Vaughan Lewis, Communication Support Officer from Oldbury Power Station, with pupils of Tortworth Primary School.

**Link to NDA criteria**

Locality, investment in young people

**Staple Hill Regeneration**

**Amount donated £1,000**

**Who is the beneficiary?**

The Staple Hill Regeneration Partnership is a group of local traders, police, local councillors, residents, church members, Salvation Army and youth organisations, helping the partnership to promote the facilities in Staple Hill for the benefit of the community.

The group requested funding to purchase a lockable notice board situated in the High Street to promote the aims of the Partnership and also for the use of other community groups in the Staple Hill area.

**Link to NDA criteria**

Support for identified area of deprivation, and local infrastructure.

**Thornbury FM**

**Amount donated £1,500**

**Who is the beneficiary?**

Thornbury FM is a community radio station run by volunteers, which goes on air for four weeks, twice a year. They requested funding to support their November broadcast.

We have also provided business expertise support in the form of a member of staff from the power station to assist a small working party, consisting mainly of Trustees and members of local businesses, to conduct a feasibility study into the possibility of applying for a licence to broadcast full-time. We have also supported the group with storage of their security fencing when not in use.

**Link to NDA criteria**

Locality

**Yorkley & District Angling Club**

**Amount donated £1,500**

**Who is the beneficiary?**

Founded in 1958 by local people, they will celebrate their 50<sup>th</sup> Anniversary next year. They are a non profit making club catering for any age group including disabled and juniors, male and female, and they lease their club waters from the Forestry Commission, namely Cannop Ponds and Speech House Lake in the Forest of Dean.

The club requested funding for support to provide access paths to three disabled platforms, three life jackets and a small boat for emergency use.

**Link to NDA criteria**

Support for identified area of deprivation, and local infrastructure.

**Oldbury Senior Citizens Luncheon Club Amount donated £500**

**Who is the beneficiary?**

The club has met every month for the past seven years in the hall of Oldbury Methodist Chapel, and provides lunch for around 35 pensioners in the Parish.

The club also acts, since the closure of the village post office and shop, as a social centre for people to meet others they would not normally see. The club sent in a request for funding to purchase a new electric cooker for the hall.

**Link to NDA criteria**

Locality and investment in the community

**Mid-Glamorgan EBP**

**Amount donated £1100**

**Who is the beneficiary?**

Mid-Glamorgan EBP operates within the County Boroughs of Bridgend, Merthyr Tydfil, Rhondda Cynon Taf and Caerphilly West. Their aim is to develop links between schools and employers which will enrich the curriculum, raise pupil achievement and develop skills/qualities that are required by today's employers. They work with 255 primary schools and offer a variety of activities with the objective of complementing and enhancing the mainstream curriculum with particular focus on science, engineering and technology.

Oldbury has long standing links with the organisation and provides practical support for their initiatives in schools.

The picture shows Angela Ryan, Communication Assistant being presented a "Supporter of Schools" certificate by Michelle Common, Primary School Support Officer for Mid Glamorgan EBP, after successfully delivering Oldbury's Primary Power Pack Project.

Funding will provide an electricity workshop aimed at Key Stage 2 pupils, which will complement the science curriculum by adding fun and relevance to previously taught classroom lessons.

**Link to NDA criteria**

Support for identified area of deprivation, investment in young people

**Oldbury-on-Severn Playing Fields**

**Amount donated £5000**

**Who is the beneficiary?**

The Oldbury-on-Severn Playing Fields Development Group is tasked with meeting the sporting aspirations of the locality through the provision of an all-weather multi-sport facility in the heart of the local community. Currently, such facilities are only available by private transport.

The facility would be available for use year-round by residents of Oldbury-on-Severn and the surrounding villages, by the Oldbury First School and by employees of local companies. The aim is to promote health and wellbeing through sporting facilities for all local parishioners.

**Link to NDA criteria**

Locality, investment in the community.

## **Paul's Place**

**Amount donated £500**

### **Who is the beneficiary?**

Paul's Place is a voluntary charity for physically and cognitively impaired adults, aged 18-59. Its aim is to promote independence where possible and to enhance the social life for disabled people in South Gloucestershire through various club activities.

Funding will be used to help run an active day centre, organise various social activities such as visits to the cinema, theatre, bowling and eating out, and provide a carers support group for family and friends.

### **Link to NDA criteria**

Locality, investment in the community

## **St. Mary's Church Hall Trust**

**Amount donated £4000**

### **Who is the beneficiary?**

St. Mary's Church Hall in Thornbury was built over 30 years ago, and is a valued community resource. As well as hosting a number of church committee meetings it is used by a wide range of local organisations and volunteer groups. The Hall committee has embarked on a long term programme to improve the fabric of the building, and reduce the environmental impact of the use of the hall in order to ensure its continued availability to the local community.

Funding will be used to replace the original hall windows which are single glazed and showing signs of age.

### **Link to NDA criteria**

Locality, investment in the community

## **Tutshill Community Pre-School**

**Amount donated £1,500**

### **Who is the beneficiary?**

The Pre-School has been community run since the early 1970's and is held at Tidenham War Memorial hall. They provide pre-school facilities from the age of two to five years old. The community is semi-rural with many of their children coming from the villages of St.Briavels, Woodcroft, Stroat and Sedbury.

Funding will be used to purchase some purpose built storage facilities for the pre-school along with new flooring to improve the safety of the pre-school room. By improving the pre-school environment through the provision of appropriate storage facilities and safe flooring, the group are able to meet the needs of all pre-school children now and in the future, both by supporting their continuing educational needs and ensuring their health and safety.

### **Link to NDA criteria**

Support for identified area of deprivation, investment in young people

## **Porch House**

**Amount donated £5,000**

### **Who is the beneficiary?**

Porch House is one of the oldest and most interesting mediaeval buildings in Thornbury. It is a fine example of a large hall house dating from the 15<sup>th</sup> century with a two storey porch and is a Grade II listed building in a conservation area. Porch House is a valuable community facility and is used by a wide variety of community groups. Porch House is currently undergoing a major conservation and refurbishment programme.

Funding will provide new kitchen appliances and units, with the removal and relocation of existing kitchen facilities, to address the requirement of Disability Discrimination Act. Pictures (above) shows how the kitchen looked before and after the alterations.

The availability of new and improved facilities in Porch House will provide much needed accommodation and allow more groups and clubs to use the facilities and enable them to promote more community activities.

### **Link to NDA criteria**

Locality, investment in the community and social infrastructure.

## **Friends of Severn Beach Primary School      Raffle prize**

### **Who is the beneficiary?**

Friends of Severn Beach Primary School are a non profit making group managed by a group of parents. During the school year they undertake a number of fundraising events to raise monies for the school.

They held their Christmas Fayre and raffle on 7 December, two digital radios were sent to the school as raffle prizes.

### **Link to NDA criteria**

Locality, investment in young people

## **5<sup>th</sup> Westerleigh Brownies**

**Raffle prize**

### **Who is the beneficiary?**

Local Brownie unit, fundraising for their unit with half of all monies raised donated to Cerebral Palsy Plus in Bristol.

They requested raffle prizes for their Christmas Fayre and two digital radios were sent to the unit.

### **Link to NDA criteria**

Locality, investment in young people

## South Gloucestershire Faith Forum

## Use of facility

### Who is the beneficiary?

The South Gloucestershire Faith Forum is an independent body, whose aims include: involving faith and cultural groups in the civic life of South Gloucestershire, giving them a representative voice; improving the quality of life for local people by working together on agreed projects and demonstrating partnership between different faiths. South Gloucestershire Council, in conjunction with *faithnet southwest*, has recognised that the faith communities of this locality make a valuable contribution to the social well being of the local population.

The Faith Forum planned to hold a number of seminars for people of faith and other concerned individuals and agencies to discuss and debate issues of common concern – identifying future joint action where possible. They requested assistance in provision of a suitable venue to hold one of their seminars. Oldbury agreed to provide a facility, namely the Lecture Theatre at Oldbury Technical Centre. A climate change seminar was held on the evening of Thursday 24 January and over 30 people attended.

### Link to NDA criteria

Support in the community

## Oldbury on Severn Memorial Hall      Amount donated £5,000

### Who is the beneficiary?

The Hall is run as a Village Hall for the benefit of the community at large. The Hall's Management Committee have a redevelopment plan in place to upgrade the 1920's building and its 30 year old boiler, so the hall is able to continue providing a service to the community.

By replacing the boiler with one which meets current emissions and efficiency standards, and installing a modern heating management system throughout, ensures the long-term viability of the Memorial Hal. It will provide an inclusive centre for a range of health, cultural, educational, artistic, social and welfare activities in the village and for the use and benefit of the wider community.

### Link to NDA criteria

Support in the community, social infrastructure.

## Portskewett Church Hall

## Amount donated £2,000

### Who is the beneficiary?

Portskewett Hall is very well used by the local community across the age spectrum from pre-school nursery to 'Good Companions Group' (OAP club). All current hall users have been balloted, and their results show overwhelmingly that the lack of suitable toilet facilities is a concern. They currently have just one toilet for men and women with no provision for disabled access. Funding will provide a new toilet block for the hall.

**Link to NDA criteria**

Support for identified area of deprivation, social infrastructure.

**The Willow Tree Centre****Amount donated £1,800****Who is the beneficiary?**

The Willow Tree Centre offers help and support to women and their families facing an unplanned pregnancy or needing help following a stillbirth, miscarriage or abortion. The Centre is affiliated to the CARE Centres Network and are committed to care and education in the community.

Funding will provide the centre with adequate funds for the rent of the building for the financial year and 20 hours per week of counselling.

**Link to NDA criteria**

Locality, investment in the community

**Northavon Youth Theatre Company****Amount donated £1000****Who is the beneficiary?**

Northavon Youth Theatre Company is a performance vehicle for students of the Northavon School of Drama. 60 young people (including disabled) are drawn from the local community and surrounding areas.

They are in their 32<sup>nd</sup> year of bringing high quality youth productions to audiences, having won no less than seven theatrical awards (plus numerous nominations for every production) in the last 14 years. Every Easter they host their main musical production in Thornbury's Armstrong Hall.

Funding will provide three 'float' microphones to amplify general speech and/or company singing. This considerably reduces the groups hire costs for each production and provides NYTC with a useful resource, which will not only become a hireable asset, but can also be shared with other community groups.

**Link to NDA criteria**

Locality, investment in young people

**Thornbury Arts Festival****Amount donated £500****Who is the beneficiary?**

Thornbury Arts Festival is a registered charity. The members of the committee are all volunteers who give their time throughout the year to organise and run the events. In order to keep the ticket prices affordable, the committee need to raise funds by way of sponsorship and support to supplement the cost of the events.

Funding will help support the group with the running costs of hall hire, props, lighting, music, printing and publicity.

**Link to NDA criteria**

Locality, investment in the community

**Cromhall Horticultural Society**

**Photocopying facility**

**Who is the beneficiary?**

Cromhall Flower Show will be held on Saturday 6 September 2008. Oldbury has supported this show in recent years by printing their show schedule. We are pleased to offer support again this year.

**Link to NDA criteria**

Locality, support in the community